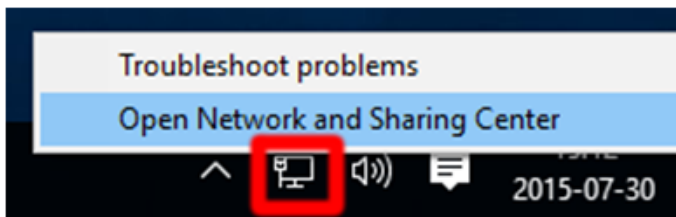


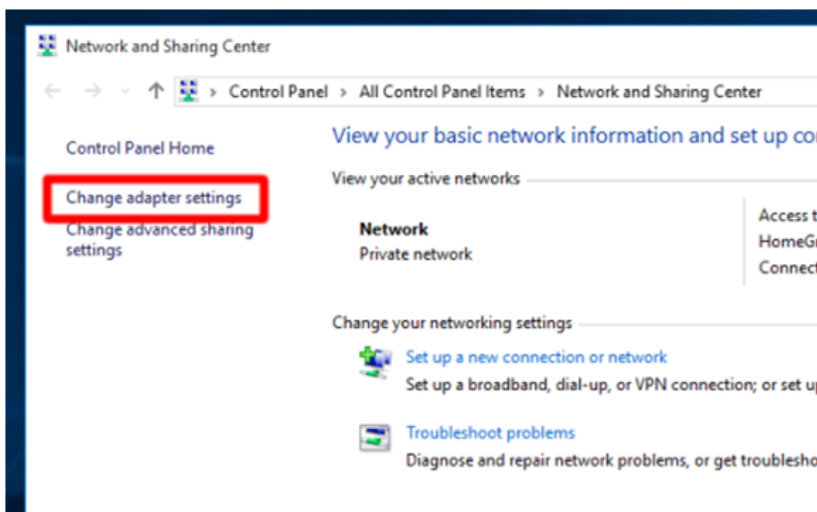
## How to configure your laptop to be within the same IP address range as your meter or gateway

You have a Windows laptop

A. Right click on the network icon at the bottom right of your screen, and select Open Network and Sharing Center.

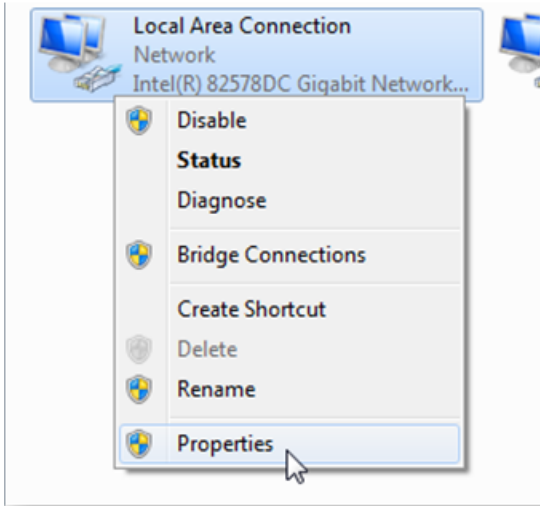


B. Click on Change adapter settings.



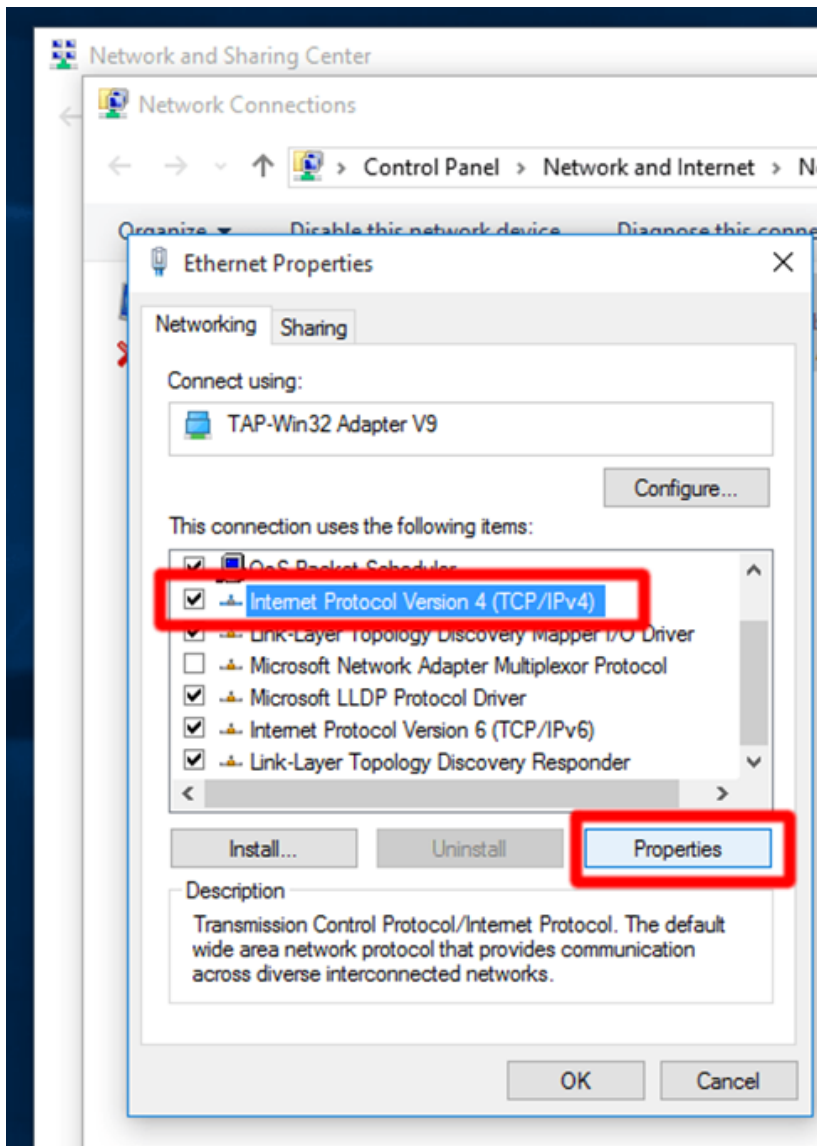
C. Right click on Local Area Connection (also called Ethernet Connection) and select Properties.

## How to configure your laptop to be within the same IP address range as your meter or gateway



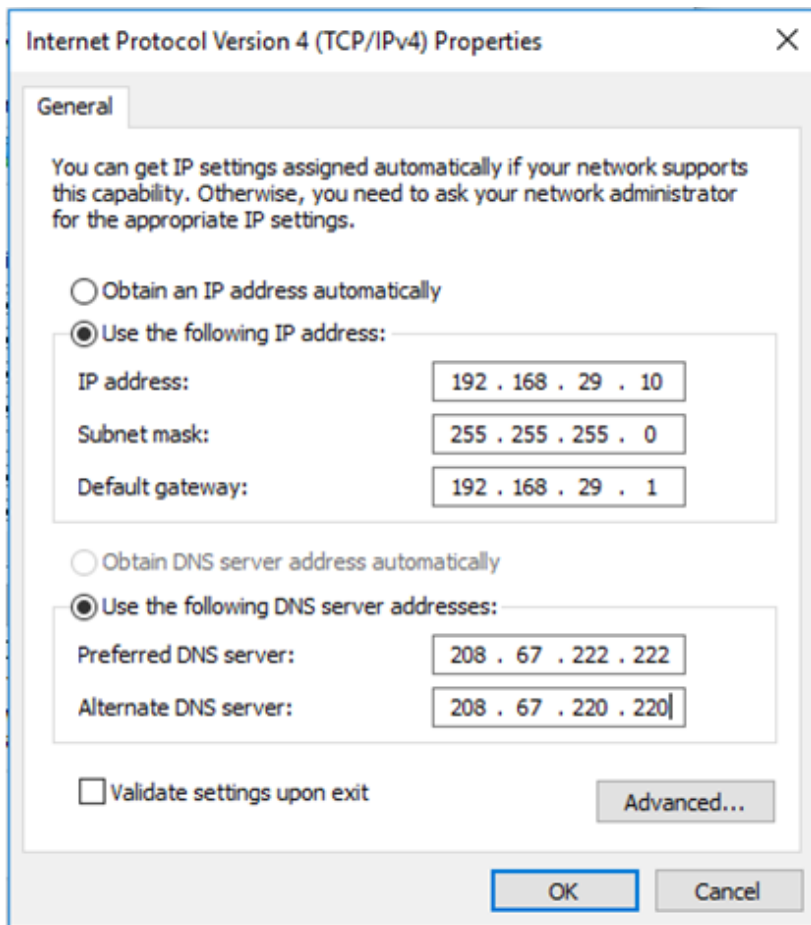
D. Select Internet Protocol Version 4 (TCP/IPv4) and click Properties.

## How to configure your laptop to be within the same IP address range as your meter or gateway



E. Select Use the following IP address, and enter the same network settings as the meter, except for the last portion of the IP address which must be unique and not used by any meter on the network.

## How to configure your laptop to be within the same IP address range as your meter or gateway

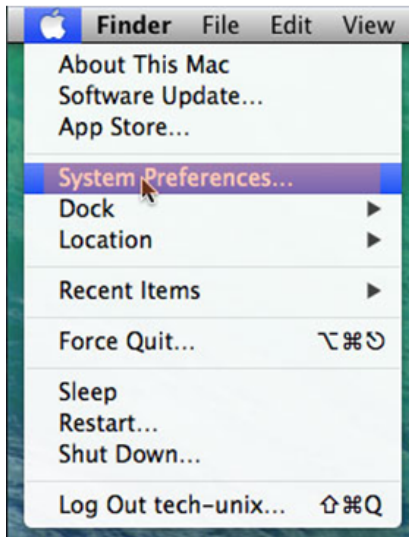


F. Click OK twice, and reboot your laptop for the new IP settings to be applied to your network card.

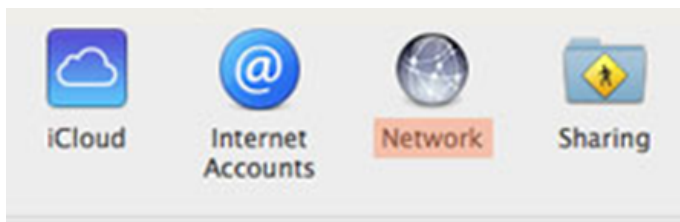
You have a MAC laptop

A. On the upper left corner click the Apple icon then select System Preferences.

## How to configure your laptop to be within the same IP address range as your meter or gateway

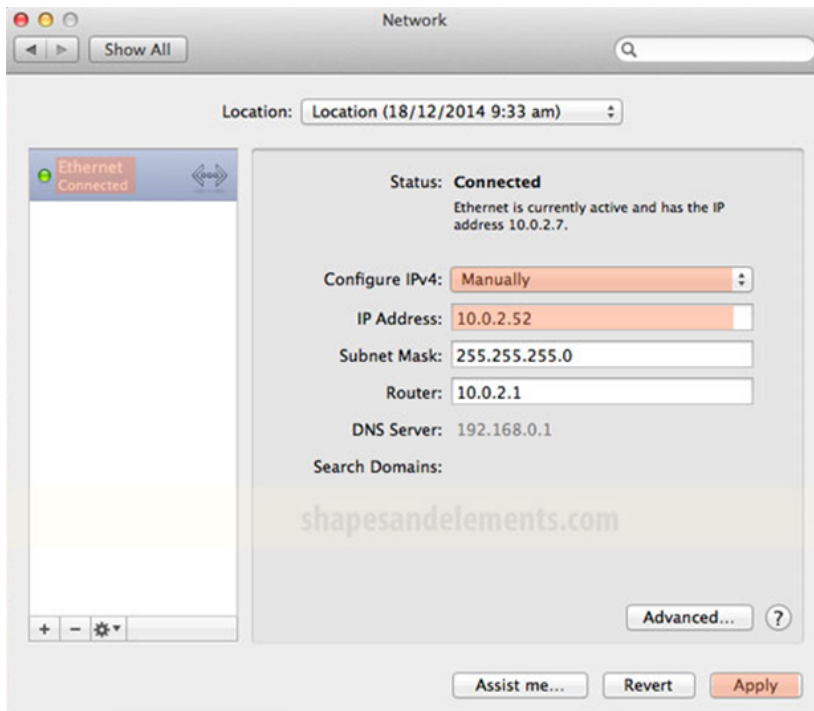


B. Under System Preferences select Network.

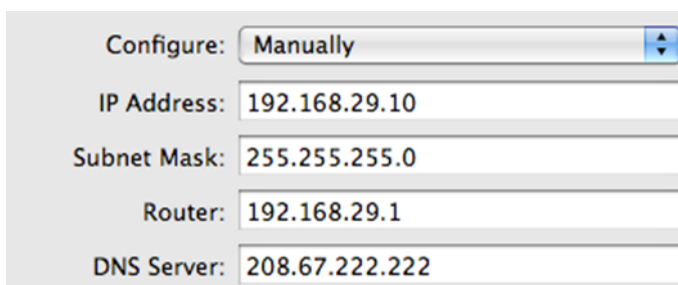


C. Select the Ethernet interface where you want to assign the static IP Address. Click the lock to make changes, it will prompt you for your credentials - your username and password - to make changes on the network settings.

## How to configure your laptop to be within the same IP address range as your meter or gateway



D. Under Configure set the option to Manually and enter the same network settings as the meter, except for the last portion of the IP address which must be unique and not used by any meter on the network.



E. Click Apply, and reboot your laptop for the new IP settings to be applied to your network card.

How to configure your laptop to be within the same IP address range  
as your meter or gateway

+353 (0)1415 1242 | [info@wattics.com](mailto:info@wattics.com) | [Contact us](#)